

estate agents **auctioneers**

**hollis
morgan**



Flat 10 Marklands, 37 Julian Road, Sneyd Park, Bristol, BS9 1NP

£500,000

A sizeable apartment with huge potential, situated in the ever Popular " Marklands" development with Balcony and garage.

- Marklands Development
- Cosmetic updating required
- Balcony with views
- Private Garage
- No Onward Chain
- Three Bedrooms
- Two Bathrooms

The Property

This spacious 1083 Sq Ft apartment is situated on the upper floors of a sought after purpose built development located in a picturesque location, this demonstrated by the well-manicured mature communal gardens which surround the development. Internally the property prospers from triple aspect living accommodation with fine views and private balcony, fitted kitchen, 3 double bedrooms (Master bedroom with En Suite) and family sized bathroom. The property benefits further Gas Central heating, private garage and parking. No Onward Chain.

Location

Sneyd Park with its imposing Victorian Architecture is amongst the most sought after locations in the City bordering The Downs with four hundred acres of green public space. Sneyd Park offers an alternative to nearby Clifton and Redland with a peaceful ambience whilst still benefiting from the excellent nearby amenities of Whiteladies Road, Henleaze and Westbury Village with independent shops, boutiques, cafes, bars and restaurant

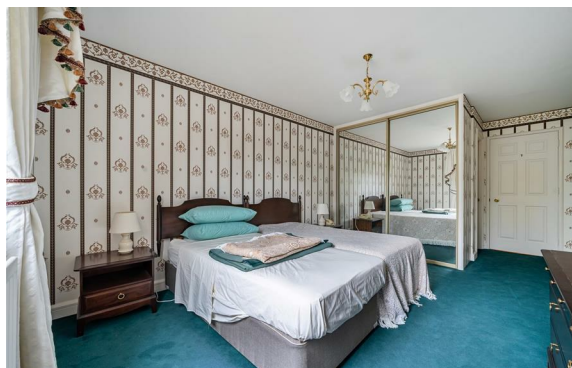
Other Information

Leasehold. Residue of 999 years.
Management Fee: £3200 PA

Council Tax Band: E

Please Note

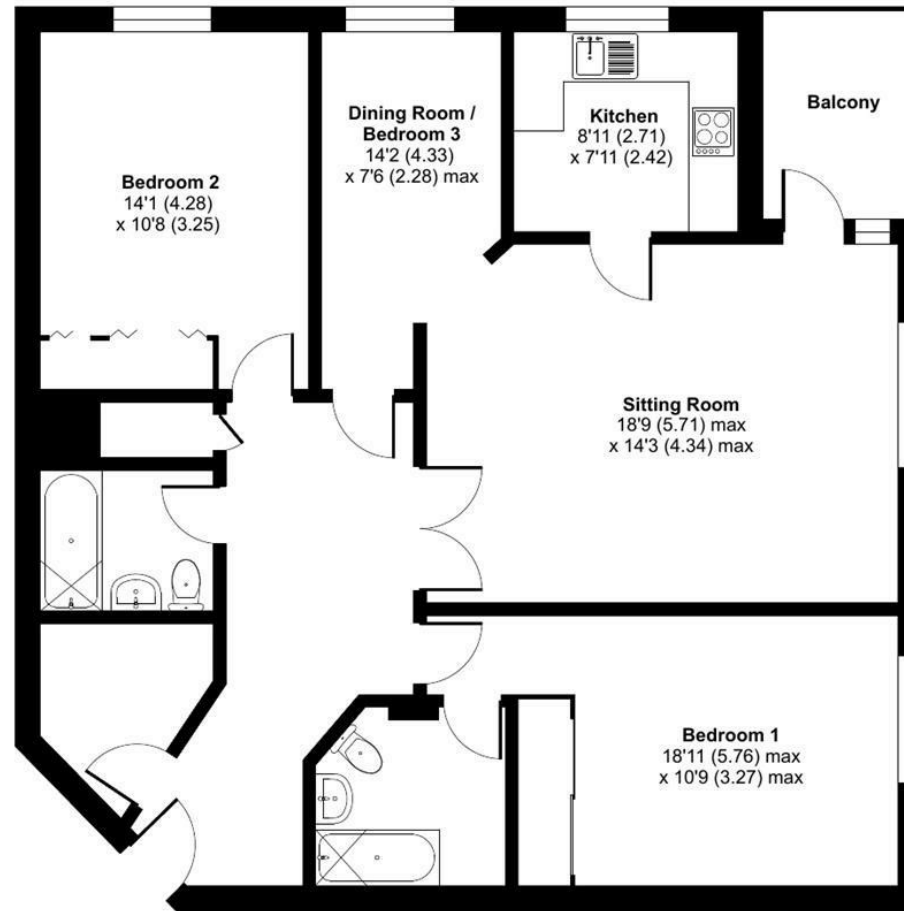
Hollis Morgan endeavour to make our sales details clear, accurate and reliable in line with the Consumer Protection from Unfair Trading Regulations 2008 but they should not be relied on as statements or representations of fact and they do not constitute any part of an offer or contract. All Hollis Morgan references to planning, tenants, boundaries, potential development, tenure etc is to be superseded by the information provided in your solicitors enquiries. It should not be assumed that this property has all the necessary Planning, Building Regulation or other consents. Any services, appliances and heating system(s) listed may not been checked or tested and you should rely on your own investigations. The seller does not make any representation or give any warranty in relation to the property and we have no authority to do so on behalf of the seller. Please note that in some instances the photographs may have been taken using a wide angle lens.



Julian Road, Bristol, BS9 1NP

Approximate Area = 1083 sq ft / 100.6 sq m

For identification only - Not to scale



FIRST FLOOR



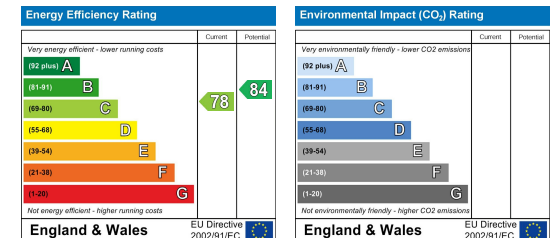
Floor plan produced in accordance with RICS Property Measurement 2nd Edition, Incorporating International Property Measurement Standards (IPMS2 Residential). © ntechcom 2026. Produced for Hollis Morgan. REF: 1441480



TEL | 0117 933 9522 | 9 Waterloo Street, Clifton, Bristol BS8 4BT

www.hollismorgan.co.uk | post@hollismorgan.co.uk

Hollis Morgan Property Limited, registered in England, registered no 7275716
Registered address, 5 Upper Belgrave Road, Clifton, Bristol BS8 2XQ



hollis
morgan
